

GLADSTONE CAMERA CLUB

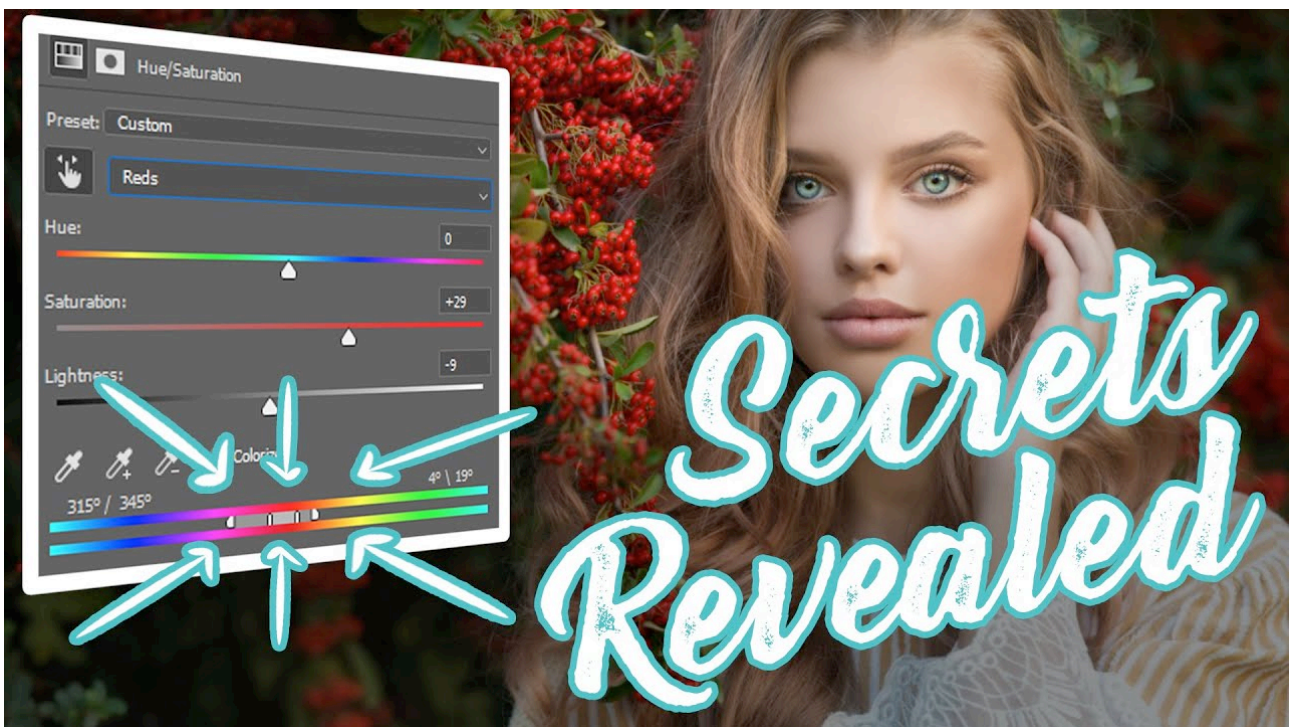
NOVEMBER - NOSTALGIA

ANYONE HOME

ACCEPTANCE

I often wonder about the story behind abandoned homes, although I guess demolishing them on a farm isn't worth the effort. Your composition has used the rule of thirds effectively. Personally I find the colours, particularly the reds and yellows, have been oversaturated and I suspect have been done globally thus giving the whole image a colour cast. The large piece of out of focus foliage in the foreground below the house is distracting. In this type of image getting sharp focus from foreground to background is important.

This is an excellent video showing how you can saturate only those areas you wish to. It's on You Tube - f64 Academy (Blake Rudis).



FORGOTTEN

HIGHLY COMMENDED

Placing the car in the centre was a good choice giving the image a pleasing symmetry. There is some great texture in the car which could be accentuated more and make that car really pop. Adding texture and clarity in ACR only to the car would achieve this.

HOT VETERAN

HONOUR

It is difficult to photograph car shows and this tight composition works to eliminate surrounding distractions and the headlight provides a good focal point. Sharp and a really good conversion to black and white. The reflection in the hub cap is added interest.

SCHOOL DAYS

ACCEPTANCE

I'm sure many can remember carrying cases like these to school and that back pack doesn't look very comfortable. The subject fits the theme but doesn't have high impact. Perhaps converting it to a mono with a sepia tone would have lessened the impact of that strong yellow wall and given it a more nostalgic feeling.

ABANDONED

HIGHLY COMMENDED

You have used the tree well to frame the little building and I wonder what those other stumps beside it were for. Whilst a pleasant scene the part which draws and holds my attention is that gnarly tree and the building is of secondary interest. Zooming and making the building the unquestioned star of the shot would have worked better for this theme IMO.

GYMPIE RAMBLER

MERIT

Steam trains are definitely nostalgic and you've captured this one well with lots of steam. It is sharp and immediately draws the viewer's eye. Bright parts of an image draw our attention so cloning some grey clouds over the white area at the top of the frame would have removed that distraction.

